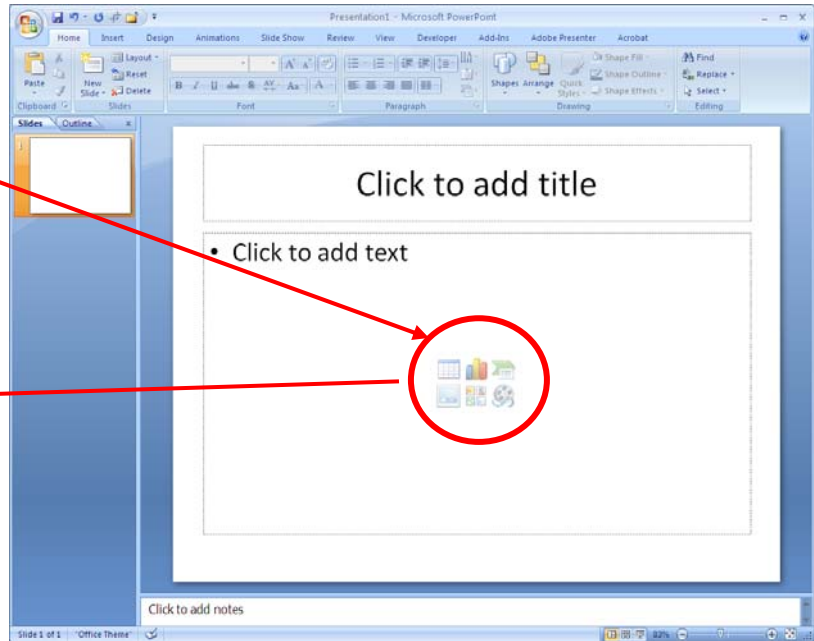
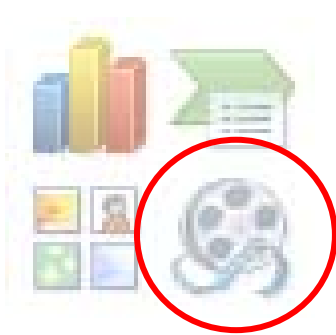


How to link a video in PowerPoint

KEY: *Your video will not be permanently embedded. PowerPoint can only "link" to a video. You will need to maintain the correct link path.*

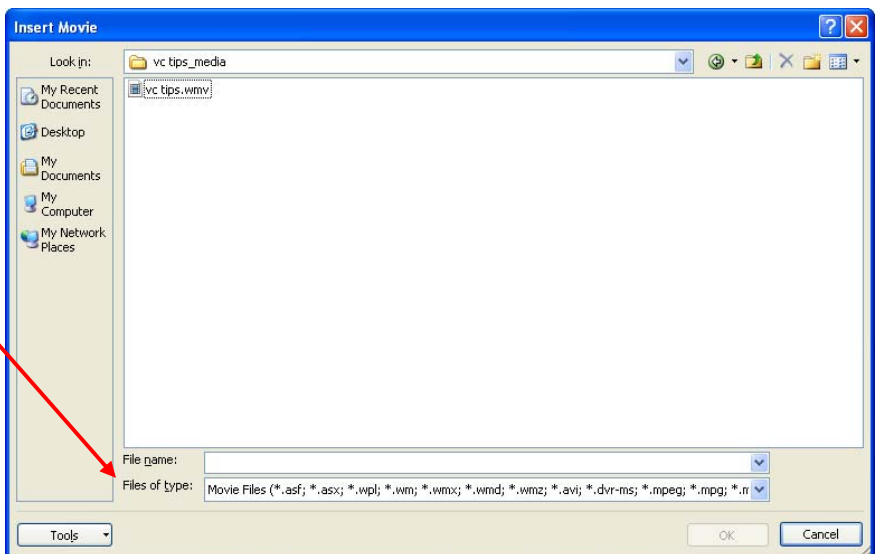
Select a slide layout that contains the Insert Media Clip Option



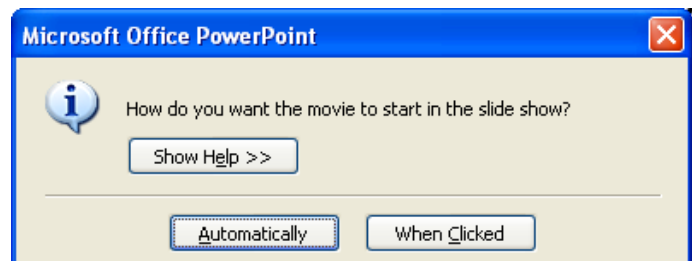
Search for your Media Clip

PowerPoint accepts several different types of Media Clips

Select your Media Clip and Click OK

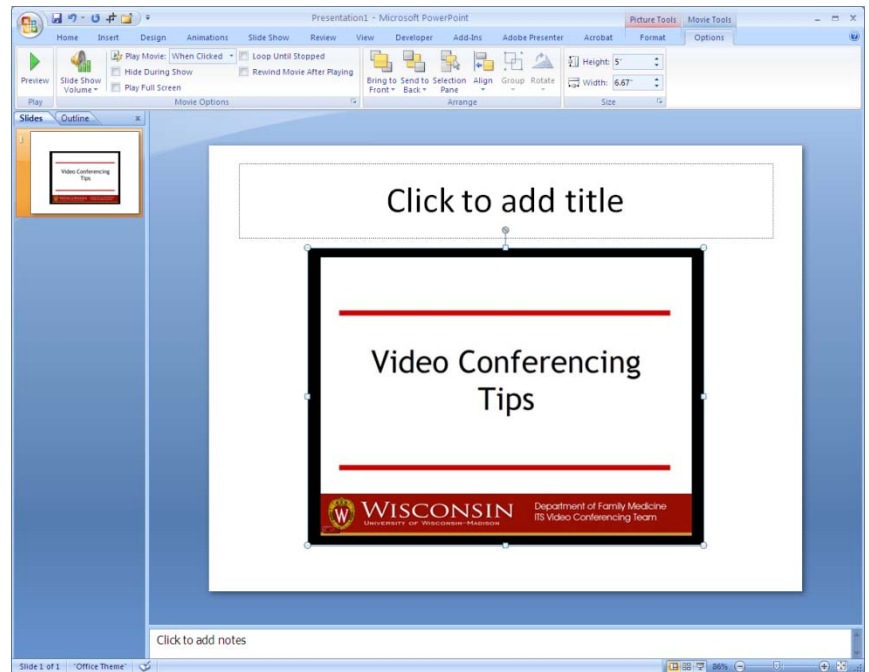


You have the option of your movie starting when you reach this slide Automatically, or only when you click on the screen

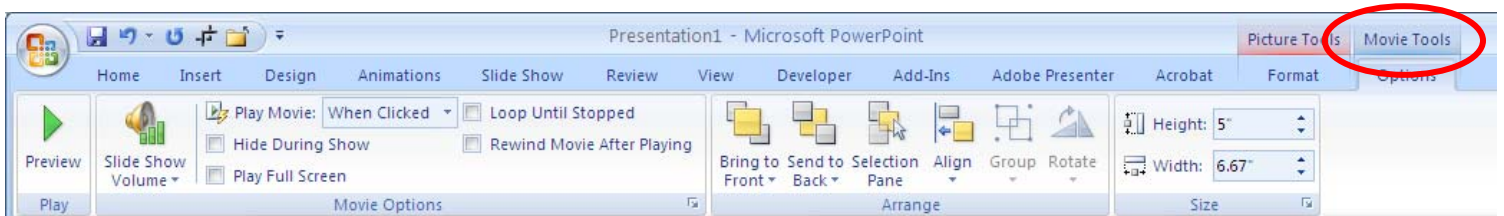


Your movie appears as a picture

You can adjust the size of the picture



There are several more options for displaying your movie on the Movie Tools tab



When you start your PowerPoint presentation, you will need to click on the movie if you selected Play Movie When Clicked. Otherwise, it should start automatically.

IMPORTANT

Because this movie is linked and not embedded, your movie may not play correctly. Here are a few ways around this:

1. Use your own, personal laptop for your presentation. Make sure the movie file is on the laptop. Link the movie. Test before your presentation.
2. Use a thumb/flash drive to store both the presentation and the movie file. Link the movie to the flash drive. NOTE: Check to make sure the movie will still run BEFORE starting your presentation. You may need to re-link it.
3. Copy your presentation and movie file to the desktop of the presentation computer. Re-link your movie before starting your presentation.