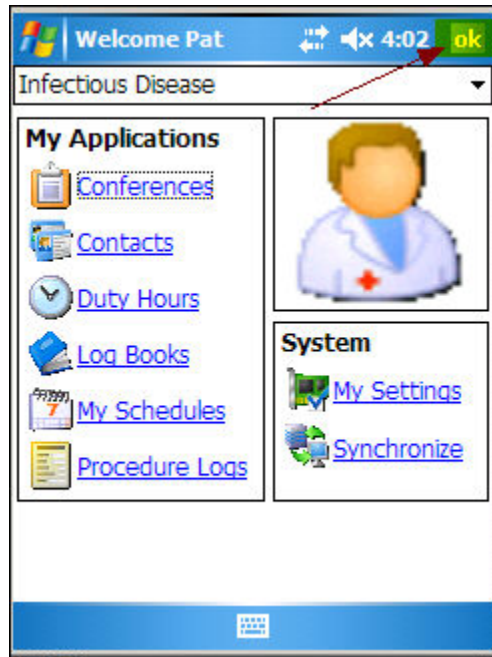


New Innovations

PDA Software Setup and Installation - WMobile



To use the Residency Management Suite (RMS) with a Portable device, each PDA user must be equipped with a device that has wireless access to the Internet OR physical access to a Personal Computer that has an Internet connection. Each PDA user may synchronize to their own or a shared personal computer.

Synchronizing exchanges data between the PDA and the RMS web database so new information entered in either place will be simultaneously updated.

To install or update the RMS, new software must be installed on each computer that PDA Users sync to and on each PDA that syncs to one or more of those computers. If you run into problems installing the software, verify that each PDA and personal computer used for syncing meet the software and hardware requirements detailed below. Looking the list over BEFORE trying to install may save you some time in the long run.

Technical Requirements

Pocket PC Requirements

Computer Requirements for Pocket PC

Microsoft Windows XP Operating System

At least 10 MB of free hard drive space

Microsoft ActiveSync 3.8 or greater

Pocket PC Device Requirements

Microsoft Windows Mobile 2003, 2003 SE, or Windows Mobile 5.0 and 6.0
New Innovations does not currently support Windows Mobile Phone Editions.

Microsoft Data Access Components (MDAC) 2.6 or greater

5 MB or greater free storage memory

NET Compact Framework 2.0 and SQL Server 2005 Mobile

Install PDA Software: Pocket PC

To install RMS 2007.1 three files must be installed on the Pocket PC: .NET Compact Framework 2.0, SQL Server 2005 Mobile, and the RMS Application. These files reside on the RMS website and three different methods can be used to download and install them on your Pocket PC:

Desktop Install of the RMS Software to a Pocket PC through a direct computer connection

Copy installation files to a Desktop, Tablet, or Notebook PC and then Copy installation files from a computer to a Pocket PC device. This option would be used if the first option is not possible and users do not share a memory card.

Use your desktop cradle or sync cable to connect your Pocket PC device to your personal computer.

For the software to install, your Pocket PC must be connected to your computer and your ActiveSync software must be running.

PHASE I: Copy installation files to a Desktop, Tablet, or Notebook PC

1. On your desktop computer, log into New Innovations Residency Management Suite.
2. Select **Main > PDA Software**.
3. In the Download Software section, click the **RMS Software for PDA devices** link.
4. Select 'My device is running Windows Mobile®' and click **Continue**.
5. Select the version of your Windows Mobile Operating System and click **Continue**.
4. Click on the files in the order they appear beginning with **NET Compact Framework 2.0**.

1. [.NET Compact Framework 2.0](#)

2. [SQL Sever 2005 Mobile](#)

3. [RMS Application](#)

5. Save each file to a easy to find location on your desktop and close the window,

Do not rename any of the files or change the file extensions (.cab).

6. Copy the saved files to your Mobile Device folder located on your computer.

Once the files have been copied to your Mobile Device folder they will need to be installed on your Pocket PC.

PHASE II: Install files to the Pocket PC device

1. On the Pocket PC device, tap **Start** and then tap **Programs**.
2. Tap the **File Explorer** icon.
3. Locate the files and then tap on each link in the order listed.
4. Tap the **RMS** icon and log into the RMS 2007.1 application (see Using RMS on the Pocket PC, [Log into RMS](#))

Wireless Install Direct to Pocket PC via the Internet.

This is the easiest option IF your Pocket PC is equipped and configured for wireless or wired Internet connection. Your owner's manual can guide you through the process of connecting to a wireless or wired home or institutional network.

To install RMS 2007.1 directly on your Pocket PC, your Pocket PC must have an Internet connection.

1. Tap **Start**, and then tap on **Internet Explorer**.
2. Enter `www.new-innov.com/PDA/installppc.htm` and tap the **go** button.
3. Under your type of Pocket PC Type, **tap on each link** in the order listed.

The files will download and automatically install. The 'Open file after download' checkbox should be checked. You will have to wait after tapping each link for the file to download.

4. When the installation is complete, tap **Start** and then **Programs**.
 5. Tap the **RMS** icon to log into RMS.
-